

**UPPER PERKIOMEN  
SCHOOL DISTRICT**  
**SCHOOL REOPENING PLAN**  
**October 22, 2020**



# Clarifications based upon feedback & concerns shared by *parents/teachers*

## Re-Rostering of K-5 Students

### Four Instructional Models being discussed:

- Full Virtual Model
- Hybrid Model (various formats/models)
- Full In-person Model (continuing with mitigation strategies)
- Full Year On-line Option (UPOLA at K-5 and Synchronous at 6-12)

### Secondary (6-12) Instructional Model in both Hybrid and Full In-Person

- Include Students both in Person & On-Line for Remainder of 20-21
- No Separate UPOLA at 6-12 level, Synchronous instruction will take place





# District Recommendation

## **K-12 HYBRID Programming beginning on November 30, 2020.**

The decision of the administration is significantly impacted by the Board's direction to adhere to the 6 feet recommendation. This model would be the only one that provides all students K-12 with the opportunity to access brick and mortar instruction at 6 feet.

# Further Examination of Elementary Students Return to School for 5 Days a Week (at 6 feet)

The administration cannot support this model due to the following factors:

- **Staffing:** Hiring 13-19 high quality teachers including 4-5 special area teachers (others K-3) would present a challenge.
  - Each new classroom teacher requires students to be re-rostered
  - Recruitment and hiring of that number of teachers may not be possible
- **Instructional Continuity and Integrity:** Insufficient time for training new teachers on the software and hardware teachers are using to support student learning.
- **Technology & Resources:** Additional technology and classroom resources would need to be purchased to ensure equity across homeroom sections.
- **Substitutes:** If able to secure, we might not have day-to-day substitutes which would not allow us to preserve the continuity or integrity of education. Without day to day substitutes, we may not be able to conduct face to face classes as scheduled.
  - Substitutes will be an issue regardless of the selected instructional model





What does it take to get ALL  
kids face to face for 5 days?



# Achieving a Face to Face Program

## Class Configuration/Instruction

- 4-6 Foot spacing across all settings, 6 feet when feasible
- All desks to face in the same direction (rather than facing each other). If not feasible, staggered or diagonal seating at shared tables to avoid “across the table” seating.
- Reinforce handwashing during key times including but not limited to: arrival and dismissal; before, during, and after preparing or eating food; after using the bathroom; after blowing one’s nose, coughing, or sneezing; after touching objects with bare hands that have been handled by other people
- Staggered/modified lunch schedules (classroom, alternative large spaces)
- Staggered recess
- TVs in lobbies and classrooms will be used to promote health and safety.
- Morning announcements will include health and safety reminders.
- Limitation of activities in classrooms that do not support social distancing



## Other School Logistics

- Students **MUST** wear face coverings at all times, with the exception of eating or drinking at lunch
- Students and staff **MUST** complete the symptom checker before school daily!
- Non-essential visitors and volunteer are restricted, substitutes, service providers, and student teachers allowed
- Elimination/Limitation on larger group gatherings and events (assemblies, field trips, class meetings)
- Prohibiting/Limiting access of non-school related activities
- Potential for modification of the school calendar: potential shortened days or half days
- This would be the final declaration for families (full face to face or full virtual)

# Implications of the Exclusion Criteria



## COVID-19 School Exclusion Recommendations

Exclusion From and Return to School Recommendations	
<b>COVID-19 Symptoms</b> <ul style="list-style-type: none"> <li>Two of the following symptoms: fever (measured or subjective), chills, fatigue, myalgia, headache, sore throat, congestion, nausea, vomiting, or diarrhea</li> <li>OR</li> <li>One of the following symptoms: cough, shortness of breath, difficulty breathing, or new loss of taste or smell</li> </ul>	<p>Individual should be tested for COVID-19.</p> <ul style="list-style-type: none"> <li>If test result is negative <b>OR</b> doctor's note with differential diagnosis, return to school after 24 hours afebrile <b>and</b> improved respiratory symptoms</li> <li>If test result is positive or individual is unable/refuses to get tested, may return to school after: <ul style="list-style-type: none"> <li>➤ 24 hours with no fever <b>and</b></li> <li>➤ Improvement in symptoms <b>and</b></li> <li>➤ 10 days since symptoms first appeared</li> </ul> </li> </ul>
<b>Positive COVID-19 PCR or Antigen (Point of Care) Test</b>	<div> <b>WITH SYMPTOMS</b> <p>May return to school after:</p> <ul style="list-style-type: none"> <li>24 hours with no fever <b>and</b></li> <li>improvement in symptoms <b>and</b></li> <li>10 days since symptoms first appeared</li> </ul> </div> <div> <b>WITHOUT SYMPTOMS</b> <p>May return to school after:</p> <ul style="list-style-type: none"> <li>10 days after specimen was collected</li> </ul> <p>*If symptoms develop during the 10 days, follow return to school guidance for positive PCR or Antigen test <u>with</u> symptoms</p> </div>
<b>Close Contact to Positive*</b> <ul style="list-style-type: none"> <li>Within 6ft for 15 minutes or more</li> <li>Household contact</li> </ul> <p>*Close contacts should be tested regardless of symptoms, however a negative test result does not end quarantine early.</p>	<div> <b>WITH SYMPTOMS</b> <p>Individual should be tested for COVID-19</p> <p>May return to school after:</p> <ul style="list-style-type: none"> <li>24 hours with no fever <b>and</b></li> <li>improvement in symptoms <b>and</b></li> <li>10 days since symptoms first appeared</li> </ul> </div> <div> <b>WITHOUT SYMPTOMS</b> <p>Excluded 14 days after last date of exposure to the person with COVID-19</p> <ul style="list-style-type: none"> <li>Household contacts are in quarantine until 14 days <u>after</u> household positive is released from isolation</li> </ul> <p><b>A negative test does not allow an individual to end their quarantine period early.</b></p> <p>*If symptoms develop during the 14 days, follow return to school guidance for Close Contact with symptoms</p> </div>
<b>**Travel to States with High COVID-19 Rates</b> <ul style="list-style-type: none"> <li>Critical workers are encouraged to wear both a face shield and mask and social distance, if unable to quarantine</li> </ul>	<div> <b>WITH SYMPTOMS</b> <p>If symptoms develop during the recommended 14 day quarantine upon return to PA, follow return to school guidance for COVID-19 symptoms</p> </div> <div> <b>WITHOUT SYMPTOMS</b> <p>Self-quarantine for 14 days from when they return to PA</p> <p><b>A negative test does not allow an individual to end their quarantine period early.</b></p> </div>

2020 – PAHAN – 517 – 07-18-UPD: Discontinuation of Transmission-Based Precautions for Patients with COVID-19

2020 – PAHAN – 527 – 09-21-ADV: Testing and Management Guidance for Patients After Exposure to SARS-CoV-2

\*\*PADOH COVID 19 Information for Travelers

Designated Contact Information for Schools

Phone: 610-278-6211

Email: [MCschoolsCOVID19@montcopa.org](mailto:MCschoolsCOVID19@montcopa.org)

Updated October 5, 2020

AT LESS  
THAN  
6 FEET...

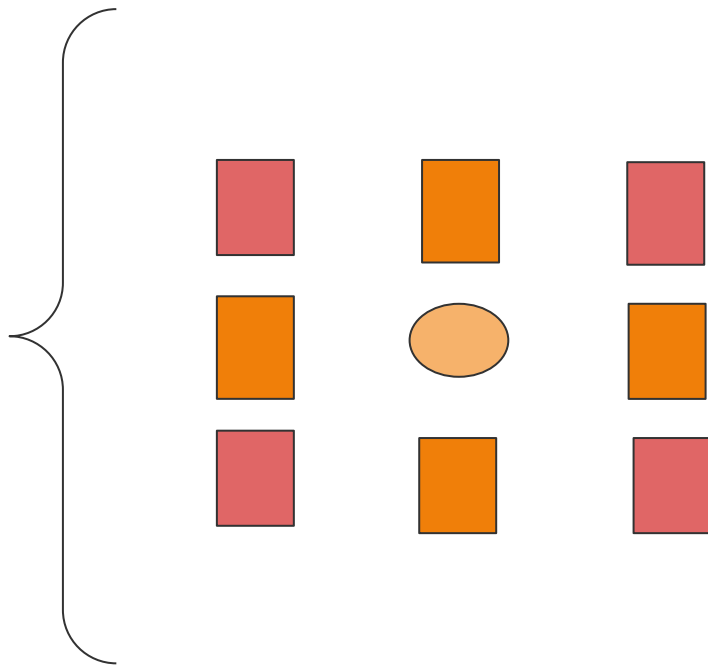
Enhanced likelihood a student would be deemed a “close contact”

- On the bus
- In the classroom
- At lunch
- At recess

This would require a minimum of a 14 day exclusion.

# THE IMPACT OF EXCLUSION GUIDANCE ON SCHOOLS

Proposed Classroom  
setup with spacing  
of 4.5-6 feet



If a student test positive for COVID-19, in accordance to the guidance, all students in “close contact” are excluded for 14 days.

In addition, any individual living in the household of the COVID positive individual must also quarantine.

In addition, if the classroom teacher is deemed in “close contact” of the student, he/she must also quarantine for 14 days.



# THE IMPACT OF EXCLUSION GUIDANCE ON SCHOOLS

## Specific to Transportation (44 Passengers, 2 per Seat)

[illegible]

# PDE and DOH GUIDANCE

The Pennsylvania Department of Education (PDE) and the Pennsylvania Department of Health (PA DOH) provided the guidance below to school districts that align COVID-19 incidence and positivity rates, by county, to the recommended instructional models to protect the health and safety of students and staff.

Transmission	Most Recent (7 Day) Incidence Rate in County	Qualifier	Most Recent (7 Day) Positivity Rate in County	Recommended Instructional Model(s)
Low	Fewer than 10 cases per 100,000 residents	AND	Less than 5%	Full In-person or Blended*
Moderate	At least 10 but less than 100 cases per 100,000 residents	OR	At least 5% but less than 10%	Blended* or Full Remote**
Substantial	At least 100 or more cases per 100,000 residents	OR	Greater than 10%	Full Remote**

# MONTCO POSITIVITY RATE (as of October 16, 2020)

Montgomery County	Week ending 10/16/20	Week ending 10/9/20	Week ending 10/2/20	Week ending 9/25/20	Week ending 9/18/20	Week ending 9/11/20	Week ending 9/4/2020	Week ending 8/28/20
New cases per 100,000 Residents	40.1	37.2	36.2	27.9	38.1	37.2	37.8	36.8
Positivity Rate	2.3%	2.4%	2.5 %	2.3%	3.0%	3.3%	3.2%	3.1%

## **Berks County Rates (as of week ending 10/16/2020):**

New Cases per 100,000 Residents - 105.7

Positivity Rate - 6.5%

<https://www.health.pa.gov/topics/disease/coronavirus/Pages/Monitoring-Dashboard.aspx>

# MONTCO TRANSMISSION RATE (as of October 16, 2020)

Recommendations for Pre-K to 12 Schools in Determining Instructional Models: The table below is updated weekly on PDE's website ([education.pa.gov/COVID19](https://education.pa.gov/COVID19)) to reflect data for the week ending the previous Friday.

[illegible]

### Number of Increased Cases over last 7 & 14 Days

Montgomery County, PA - COVID-19 Website -

### Data Collected Every Friday (Week Ending)

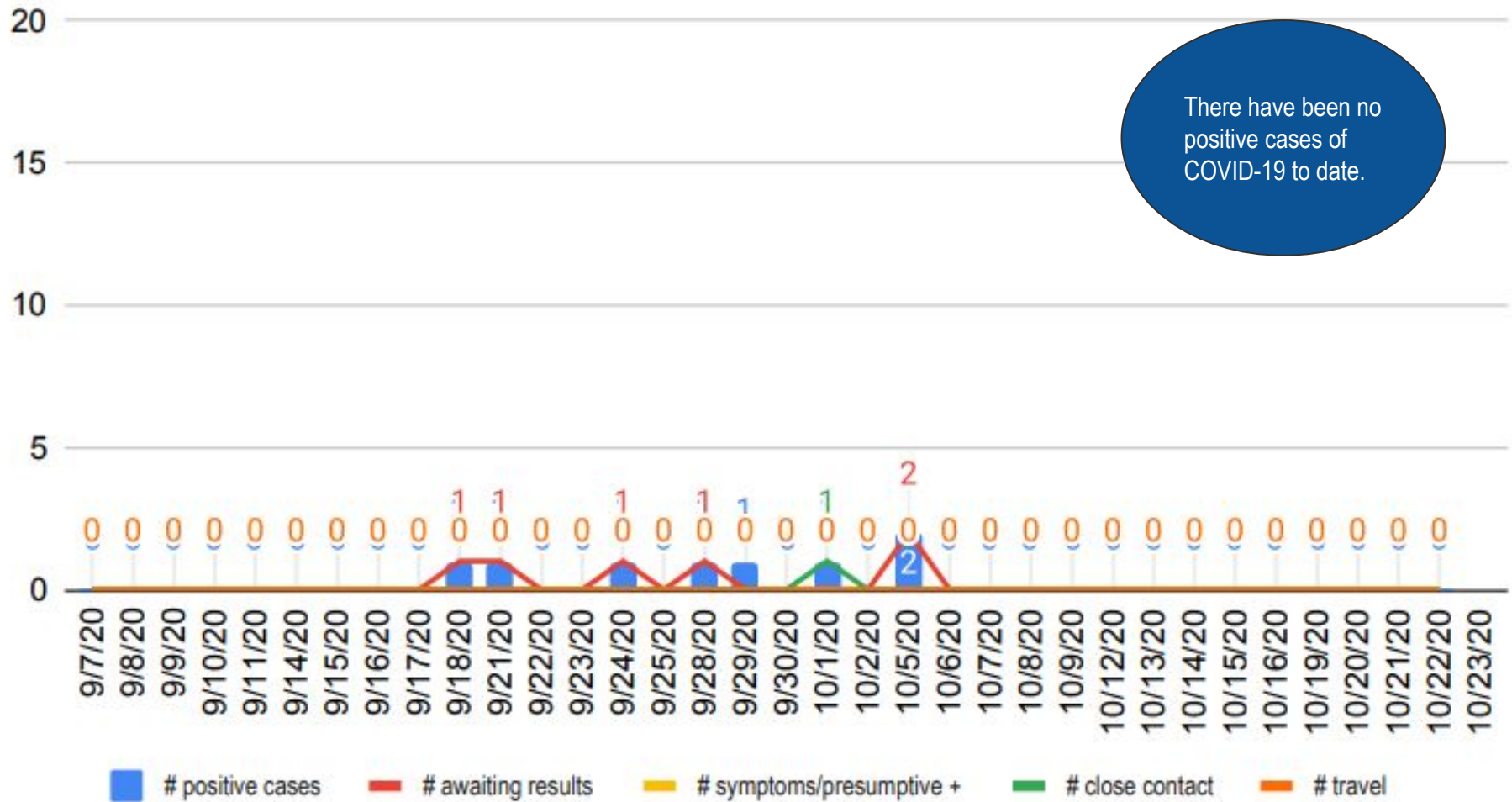
EXAMPLE:  $1 / 4 = 1$  positive case in last 7 days and 4 positive cases total in last 14 days

<https://data-montcopa.opendata.arcgis.com/pages/covid-19>

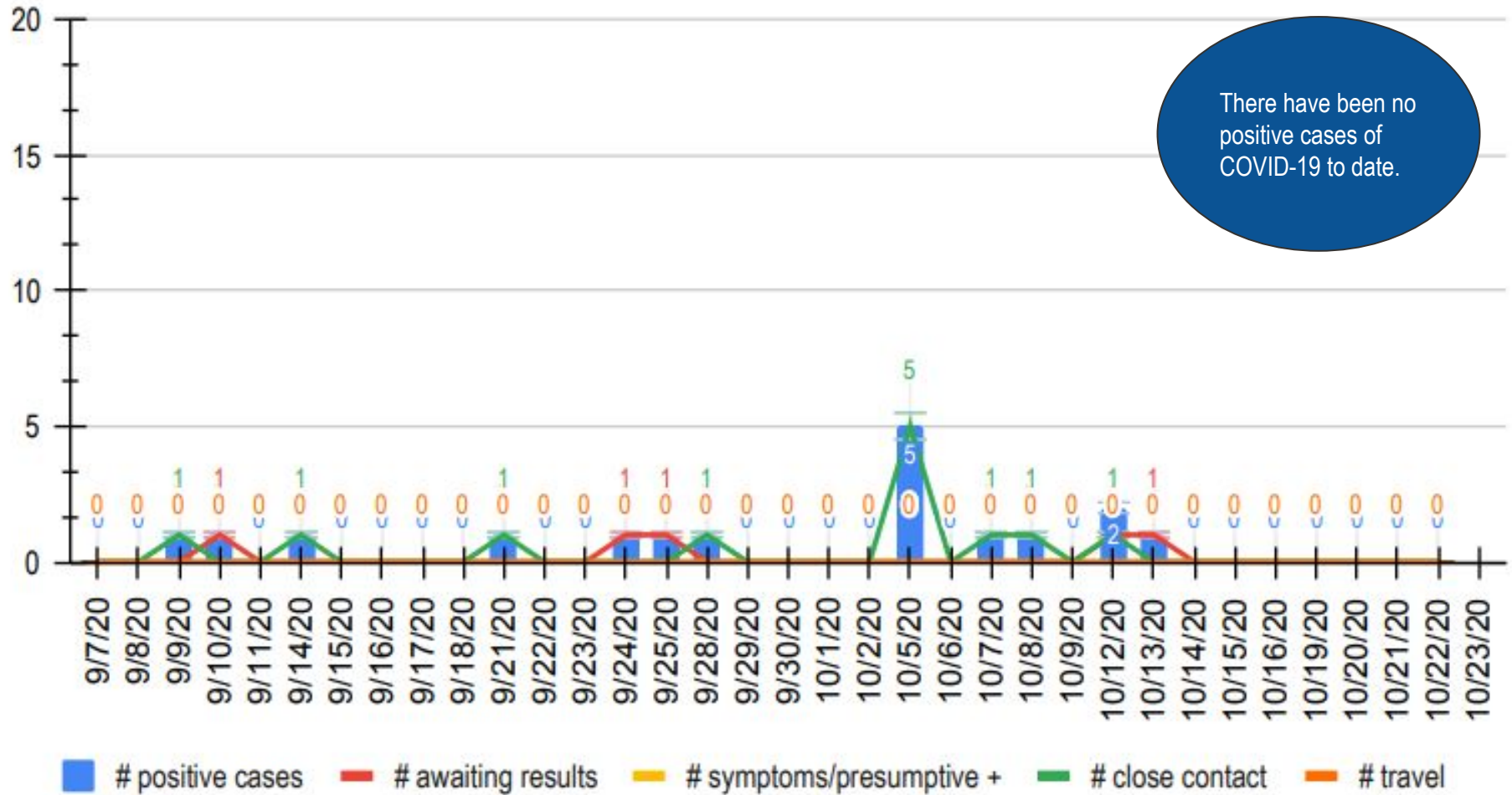
[illegible]



# COVID-19 Student Trend Data



# STAFF COVID-19 COUNT



## CDC RESOURCES

ADDED SEPTEMBER 21, 2020

The Centers for Disease and Control and Prevention (CDC) released the *Indicators for Dynamic School Decision-Making* document to assist school leaders. The following are core and some of the secondary indicators for decision makers to consider when deciding to open, close, or reopen schools over time. The core indicators include measures of underlying community transmission as well as a measure of adherence to key mitigation strategies.

Link to UPSD COVID-19 Metrics - [Click Here](#)

Indicators	Lowest Risk	Lower Risk	Moderate Risk	Higher Risk	Highest Risk
	CORE INDICATORS				
# of new cases per 100,000 within last 14 days	<5	5 to <20	20 to <50***	50 to <200	200+
% pf RT-PCR tests that are positive during the last 14 days	<3%***	3% to <5%	5% to <8%	8% to <10%	10%+
Ability of the school to implement 5 key mitigation strategies 1. Masks 2. Social Distancing 3. Hand Hygiene 4. Clean/Disinfection 5. Contact Tracing with the Health Dept.	Implement all 5 strategies correctly and consistently	Implement all 5 strategies correctly but inconsistently	Implement 3-4 strategies correctly and consistently	Implement 1-2 strategies correctly and consistently	Implement no strategies
Indicators	Lowest Risk	Lower Risk	Moderate Risk	Higher Risk	Highest Risk
	Full Virtual Model	Hybrid Model	Full Face to Face Model		

# Next Steps IF Interested in Full In-Person 5-Days a Week

- **Parent Declaration** Sent Friday Oct 23rd (Closes Friday October 30)  
Choice of In-Person 5 Days a Week OR UPOLA (K-5); Synchronous/Full Virtual (6-12)  
Final Parent Declaration of the School Year  
Declaration on Transportation (Opt Out if able to provide own transportation)
- **Communication with Faculty & Staff**  
Confirmation of Report to Work with New Instructional Model
- **Modifications to the Health & Safety Plan** (approval on Nov 12th)
- **Building Level Adjustments and Plans to Mitigate Concerns:**  
Safe and Socially Distanced Entrance and Exit of School  
Daily Symptom Checker (Must be completed at Home BEFORE School)  
Cafeteria - Serving Lines and Seating Spacing  
Transitions - One-Way Traffic, Hallway Patterns, Procedures for Leaving Classroom  
Seating Charts for all areas for potential Contact Tracing (including lunch)
- **Re-Route Transportation** for K-12 Full In-Person Model
- **Confirm Classroom Rosters** (K-5)

1

2

3

4

5

An illustration featuring three stylized human figures in dark grey. Above them are three speech bubbles: a blue one on the left, a greenish-grey one in the center, and a purple one on the right. A dark blue rectangular box is positioned in front of the figures, containing the text 'Board Questions/Discussion' in white.

# **Board Questions/Discussion**



# Secondary Hybrid Instructional Model

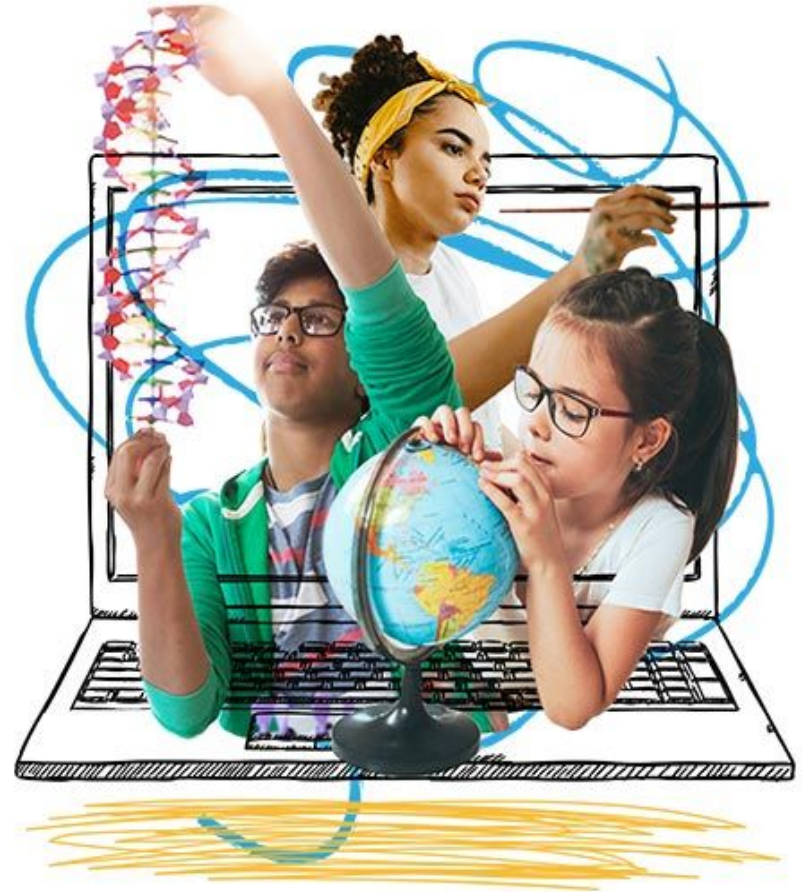


An illustration of a classroom scene. In the foreground, the back of a student's head and shoulders are visible, wearing an orange shirt. To the left, a large computer monitor displays a colorful bar chart and a line graph. In the background, a teacher in a red shirt stands next to a green chalkboard, pointing at a pie chart with a black stick. The pie chart has a section labeled '30%'. Two other students are visible in the background, one in a blue shirt and one in a yellow shirt, both wearing orange chairs. The overall style is flat and colorful.

# Secondary Teacher Technology Station

# Secondary Group Delineation

	Blue Group	Gold Group
	HS: A - Le: 548 MS: A - Le: 414	HS: Li - Z: 518 MS: Li - Z: 409
<b>Monday</b>	In Person	Virtual
<b>Tuesday</b>	In Person	Virtual
<b>Wednesday</b>	Virtual Independent Learning	Virtual Independent Learning
<b>Thursday</b>	Virtual	In Person
<b>Friday</b>	Virtual	In Person



# Daily Schedule

## High School

All Staff and students will follow the schedule listed below

- Period 1: 7:35 - 8:55
- Period 3: 9:05 - 10:25
- Intervention: 10:30 - 11:00
  - AM Tech arrives at 10:40
  - PM Tech departs at 11:00
- Period 5: 11:10 - 1:00
- Period 6: 1:10 - 2:30

# Specifics for High School Hybrid Model

- 2 days face to face, 2 days synchronous virtual, Wednesday Independent Learning
- Students will attend according to alphabet last name
- Teacher will teach students face to face while students at home will join class virtually
- A full technology package and class structure guidelines will assist teachers with managing both environments
- WMCTC students at HS are not impacted by hybrid, still following WMCTC education plan (transportation concerns)
- All students keep same teachers they currently have in full virtual environment
- Lunches will be served in Cafe and/or other assigned location with assigned seats in desks
- No access to lockers





# Daily Schedule

## Middle School

### 6th Grade

Period 1	Core	7:35-9:10 (95)
Period 2	Core	9:15-10:45 (90)
Period 3	Encore	10:50-11:35 (45)
Period 4	Lunch	11:35-12:05 (30)
Period 3	Encore	12:10-12:55 (45)
Period 5	Core	1:00-2:30 (90)

### 7th Grade

Period 1	Core	7:35-9:10 (95)
Period 2	Encore	9:15-10:45 (90)
Period 3	Core	10:50-12:20 (90)
Period 4	Lunch	12:25-12:55 (30)
Period 5	Core	1:00-2:30 (90)

### 8th Grade

Period 1	Core	7:35-9:10 (95)
Period 2	Core	9:15-10:45 (90)
Period 3	Lunch	10:50-11:20 (30)
Period 4	Core	11:25-12:55 (90)
Period 5	Encore	1:00-2:30 (90)

# Specifics for Middle School Hybrid Model

- 2 days face to face, 2 days synchronous virtual, Wednesday Independent Learning
- Students will attend according to alphabet last name
- Teacher will teach students face to face while students at home will join class virtually
- A full technology package and class structure guidelines will assist teachers with managing both environments
- All students keep same teachers they currently have in full virtual environment
- MS Connection Coordinators will remain asynchronous, monitoring Accelerated Education through Google Classroom
- Lunches will be served in Cafe and Aux Gym with assigned seats in desks
- No access to lockers



# Secondary Student Expectations 6-12

Brick and Mortar	Virtual Setting
<ul style="list-style-type: none"> <li>● <b>STUDENTS WILL BE REQUIRED TO WEAR MASKS AT ALL TIMES!</b></li> <li>● Students are required to be in their physical classroom prior to the late bell ringing. Attendance will be taken by the classroom teacher per period as if all students were in the building</li> <li>● Complete the assignments and instructional activities as assigned by each teacher by the expected due dates.</li> <li>● Contact the teacher if they have questions or concerns.</li> <li>● When participating in physical classes:             <ol style="list-style-type: none"> <li>a. School rules related to appropriate dress, behavior, and language are in full effect.</li> <li>b. Be respectful as your peers in virtual learning will be trying to focus on hearing the teacher in the Zoom session.</li> </ol> </li> </ul>	<ul style="list-style-type: none"> <li>● Students are required to log-in to their virtual class sessions when live in-person sessions are occurring. Attendance will be taken by the classroom teacher per period as if all students were in the building</li> <li>● Complete the assignments and instructional activities as assigned by each teacher by the expected due dates.</li> <li>● Contact the teacher if they have questions or concerns.</li> <li>● When participating in virtual lessons:             <ol style="list-style-type: none"> <li>a. School rules related to appropriate dress, behavior, and language extend to the “live” virtual classroom.</li> <li>b. Once you enter a classroom session, students are encouraged to keep their camera on so that the teacher can communicate with students effectively.</li> <li>c. During “live” virtual lessons, home devices should be in a central location in the home that has been designated as an appropriate environment for students to engage with their teachers and classmates. This location should be in view of parents or guardians.</li> <li>d. In large class sessions, microphones should be muted at the direction of the teacher when the teacher or your classmates are speaking. If you have questions, you can raise your hand, as you do in a classroom, and the teacher will ask you to unmute your microphone to speak.</li> </ol> </li> </ul>



Online



In the classroom

# Elementary Hybrid Instructional Model

# Elementary Group Delineation - Grades 1 -5



	Blue Group	Gold Group
	A- LE	LI- Z
<b>Monday</b>	In Person	Virtual
<b>Tuesday</b>	In Person	Virtual
<b>Wednesday</b>	Virtual Asynchronous Learning with Live Morning Meeting	Virtual Asynchronous Learning with Live Morning Meeting
<b>Thursday</b>	Virtual	In Person
<b>Friday</b>	Virtual	In Person

All Kindergarten Students Attend 4 Days a Week - Half Day (M,T, Th, F) - Wed = Virtual Independent Learning



Time	Activity
8:45-9:00	Arrival, Breakfast, HR, Announcements
9:00-9:30	Foundations
9:30-10:45	ELA and Writing Instruction
10:50-11:20	Lunch
11:20-11:50	Recess
11:50-12:20	Social/Emotional Learning: PBIS and Second Step Lessons
12:20-1:20	ELA and Writing Instruction
1:20-2:00	Exploratory Classes - Gym, Art, etc.
2:00-3:30	Math Instruction
3:30-3:45	Pack Up and Dismissal

# Sample Grades 1-3 Brick & Mortar Schedule



# Sample 4-5 Center Brick & Mortar Schedule

Time	Activity
8:45-9:05	Arrival, Breakfast, HR, Announcements
9:05-10:40	Reading Instruction
10:45-11:15	Lunch
11:25-11:55	Recess
12:00-12:40	Writing Instruction
12:40-2:10	Math Instruction
2:10-2:50	Science/Social Studies Instruction
2:50-3:30	Exploratory Classes - Gym, Art, etc.
3:30-3:45	Pack Up and Dismissal



Time	Activity
8:30 - 9:00 AM	Morning Meeting in Virtual Homeroom
9:00 - 10:00 AM	Reading with Virtual Teacher
10:00 - 10:45 AM	Asynchronous Writing
11:00 - 11:30 AM	Lexia Lesson
11:30 - 12:30 PM	Lunch and Recess Block
12:30 - 1:30 PM	Math with Virtual Teacher
1:30 - 2:15 PM	Asynchronous Soc. St./Science
2:15 - 2:45 PM	Imagine Math Lesson
3:00 - 3:45 PM	Targeted Support as Needed

# Sample Grades 1-5 Virtual Schedule



# Elementary Student Expectations

Brick and Mortar	Virtual Setting
<ul style="list-style-type: none"><li>● <b>STUDENTS WILL BE REQUIRED TO WEAR MASKS AT ALL TIMES!</b></li><li>● Students and families are required to follow all protocols outlines in the health and safety plan including: completing the symptom check prior to arrival at school, maintaining social distance and practicing frequent hand washing.</li><li>● Students will be seated in desks that are 6 feet apart in the classroom and in the cafeteria.</li><li>● Actively engage in instructional activities and tasks.</li><li>● Participate in specials, lunch and recess.</li><li>● Engage appropriately with peers and school friends.</li><li>● Attendance will be taken each morning by the face to face classroom teacher</li><li>● Enjoy school and have fun being back!</li></ul>	<ul style="list-style-type: none"><li>● Students will be engaged in live math and reading lessons with a virtual teacher who will be different than their teacher assigned on face to face days.</li><li>● Students are expected to participate in virtual learning just as they would in the face to face classroom. Students should: log on a few minutes early to ensure they are ready, have devices fully charged, have materials ready to go for the day, have a quiet place to work that is free from distractions, wait until given breaks to enjoy play with a toy or a snack.</li><li>● Follow teacher directions when given. For example, students should mute themselves unless otherwise directed.</li><li>● Attendance will be taken each morning by the virtual teacher.</li></ul>

# Benefits of the Recommended Hybrid Model K-12

- Safe environment for teachers and students to engage in learning by maintaining six feet distance, and managing movement in buildings
- Students instructed by our current, highly qualified, trained teachers to ensure continued high quality education for all students; if additional staff are needed and hired, they would be paired and mentored with our experienced staff.
- Face to face interactions for students and teachers to encourage social and emotional learning, community building, and promote good mental health
- Accomplish what is desired by grade level- building knowledge and skills according to grade level standards - State assessments are still scheduled and participation will be mandatory.
- Ensuring nutritional meals are available for students on a daily basis that you don't have to travel to pick up (though great, some still miss out).
- Flexibility in schedules to accommodate students and teachers who need to quarantine.

# Challenges of the Recommended Hybrid Model K-12

- Transportation
- Secondary level-monitoring two groups simultaneously (face to face and virtual instruction)
- Elementary level
  - Rostering: Principals would do their best to avoid roster interruptions for students, however, teachers may change for some students if a return to full face to face is recommended later in the school year
  - There will be changes for students and teachers who may need to quarantine or isolate.
  - Proposed model is based on current enrollment numbers and additional staffing may need to be added if many students return from homeschool and/or charter schools. Onboarding additional teachers and staff continues to be a challenge.
  - If we need to close an elementary building in the hybrid model, moving back to full virtual would require additional transitions. This would not be seamless (due to staffing and class sizes of hybrid rosters).
  - Kindergarten class assignments for AM/PM may change due to transportation declarations



# Health and Safety Plan Reminders for Reopening Schools



## Health and Safety Plan Requirements

- Completion of the Symptom Checker via Skyward 30 minutes prior to school
- Strict compliance with the [Montgomery County Exclusion Guidelines](#)
- Masks **MUST** be worn on the bus, in school, and the classroom



# CORONAVIRUS

PROTECT YOURSELF AGAINST COVID-19



WASH YOUR HANDS  
FREQUENTLY



MAINTAIN  
SOCIAL DISTANCING



AVOID TOUCHING EYE,  
NOSE AND MOUTH



PRACTICE RESPIRATORY  
HYGIENE



SEEK MEDICAL  
CARE EARLY



STAY INFORMED  
AND FOLLOW ADVISORS



# Travel Considerations/Reminders

## **\*\*Travel to States with High COVID-19 Rates**

- **Critical workers are encouraged to wear both a face shield and mask and social distance, if unable to quarantine**

### **WITH SYMPTOMS**

If symptoms develop during the recommended 14 day quarantine upon return to PA, follow return to school guidance for COVID-19 symptoms

### **WITHOUT SYMPTOMS**

Self-quarantine for 14 days from when they return to PA

***A negative test does not allow an individual to end their quarantine period early.***

Alabama  
Alaska  
Arkansas  
Florida  
Idaho  
Illinois  
Indiana  
Iowa  
Kansas

Minnesota  
Mississippi  
Missouri  
Montana  
Nebraska  
Nevada  
North Carolina  
North Dakota  
Oklahoma

South Dakota  
Tennessee  
Texas  
Utah  
Wisconsin  
Wyoming  
Kentucky  
South Carolina

**Any STUDENT/STAFF member who travels to a listed state, MAY NOT return to school buildings for 14 days!**

# Other Considerations for Plan Implementation

- Possible Hybrid “Practice Day” for Blue and Gold Students the week of Nov 16th
- Revised School Calendar Listing Hybrid Schedule - Approval at Nov. 12, 2020 Board Mtg.
- Purchasing and arrival of necessary materials
- Additional nursing and custodial staff
- Onboarding of additional teachers to support teacher/staff leaves, hybrid model and day to day absences

## **General Considerations for Transition to ANY In-person Instruction:**

- Travel Restrictions in Place for ALL students, faculty, staff and visitors (if allowed)
- Staff return to brick and mortar beginning Week of November 9th
  - ◆ New Policies and Procedures at Each School
  - ◆ Necessary Training and Practice with Technology Supported by Tech Staff
  - ◆ Classroom Preparation for Return of Students to In-Person Instruction
- Winter Athletics - High School & Middle School - Approval at Nov. 12, 2020 Board Mtg.

An illustration featuring three stylized human figures in dark grey. Above them are three speech bubbles: a blue one on the left, a greenish-grey one in the center, and a purple one on the right. A dark blue rectangular box with white text is overlaid on the left side of the figures.

# **Board Questions/Discussion**